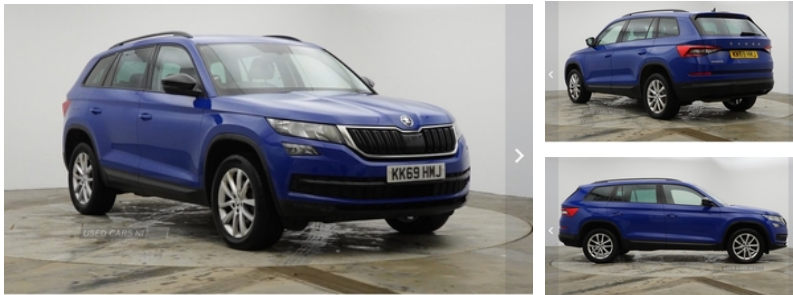


## Skoda Kodiaq 2.0 TDI SE 4x4 5dr [7 Seat] | Dec 2019

# £19,295



### Vehicle Features

2 rails with 2 hooks including 4 hooks for net programme, 2x vertical Nets), 4 foldable roof handles with rear coat hooks, 4 lashing points on luggage floor, 12V socket in boot, 60:40 foldable rear seat with sliding adjustment and backrest angle adjustment, Aero front windscreen wipers with intermittent function, Aero rear window wiper, Alarm with interior monitoring and tilt sensor with safe function, Auto dimming rear view mirror, Auto door release and activation of warning lights, Automatic activation of hazard warning lights, Black electric window control buttons, Black wheel arch surrounds, Bluetooth system, Body colour bumpers, Body colour door mirrors and handles, Bolero Radio, Bottle holders in door panel in the 1.5 litre front and 1 litre rear, Cargo storage compartments, Centre console with open storage box, Chrome interior door handles, Coat hooks on B pillar, Covered storage compartment on driver side, cup holder and 12V socket, Digital voice enhancement, Driver and passenger airbags, ECO Stop/start function, Electric adjustable heated door mirrors with integrated indicators, Electric front and rear windows, Electronic parking brake with hill hold control, Emergency rear braking signal, ESC (incl. ABS+MSR+ASR+EDS+HBA+DSR+RBS+MKB), Exterior temperature indicator, Front and rear door armrest with black adductor trim, Front and rear three point safety belt on all seats, Front assist includes AEB city/urban, Front centre armrest with storage compartment, Front courtesy lights, Front fog lights, Front side airbags, Fuel cut off safety device, Gear shift lever with chrome frame and black gloss insert, Halogen headlights with LED daytime running lights, Head and knee airbags, Headlight washers, Heated rear window, Height adjustable front headrests, Height adjustable front seats, Height adjustable rear headrests, Illuminated and cooled glovebox, Illuminated luggage compartment, illuminated with closing, Immobiliser, Invisible tailpipe, Isofix system on outer rear seats, LED rear fog light, LED third brake light in rear spoiler, Light assistant (coming home/tunnel light), Manually adjustable steering column, Net programme in boot (1x horizontal Net, Overhead glasses storage compartment, Passenger airbag deactivate switch, Pollen filter, Power assist steering, Radiator grille frame in black with chrome

<b>Miles:</b>	49200
<b>Fuel Type:</b>	Diesel
<b>Transmission:</b>	Manual
<b>Colour:</b>	Blue
<b>Engine Size:</b>	1968
<b>Tax Band:</b>	Petrol/Diesel (£190 p/a)
<b>Body Style:</b>	Sport utility vehicle
<b>Insurance group:</b>	17E
<b>Reg:</b>	KK69HML

### Technical Specs

<b>DIMENSIONS</b>	
<b>Length:</b>	4697mm
<b>Width:</b>	1882mm
<b>Height:</b>	1659mm
<b>Seats:</b>	7
<b>Luggage Capacity (Seats Up):</b>	270L
<b>Gross Weight:</b>	2443KG
<b>Max. Loading Weight:</b>	750KG
<b>PERFORMANCE &amp; ECONOMY</b>	
<b>Fuel Consum. (Urban Cold):</b>	47.1MPG
<b>Fuel Consum. (Extra Urban):</b>	60.1MPG
<b>Fuel Consum. (Combined):</b>	54.3MPG
<b>Fuel Tank Capacity:</b>	60L
<b>Number Of Gears:</b>	6 SPEED
<b>Top Speed:</b>	121MPH
<b>Acceleration 0-100 km/h:</b>	9.9s
<b>Engine Power BHP:</b>	147.5BHP

strip, Rain and light sensors, Rear centre armrest with cupholders, Rear disc brakes, Rear spoiler, Remote central locking, Roll up luggage compartment cover with intermediate position, Safety reflectors on front and rear doors, Safety vest holder in door, Seat belt reminder for all seats, Small Bags on the inner sides of the front backrests, Small pockets on the inner side of the front backrests, Speed limiter, Storage compartment in lower middle Instrument panel, Sunset privacy glass, Tailgate unlocking from outside, Three rear height adjustable headrests, Ticket holder on A Pillar, Tinted windows, Two tone horn, Tyre pressure monitor, Umbrella in door panel, Warning lights in front doors, Without engine designation